

MORE EFFECTIVE SHIP LOADING AND UNLOADING CAPACITY IN THE ADM ROMANIA TERMINAL IN THE PORT OF CONSTANTA



Project cofinanced by the European Union from the Cohesion Fund through the Transport Program. For more details on the Transport Program, please visit www.mt.ro

SMIS Code 312391.



Cofinanțat de
Uniunea Europeană



PROGRAMUL
TRANSPORT
2021 - 2027

Increasing the ship load/unload capabilities in the ADM terminal in the port of Constanta servicing the flows of commodities - grains to and from Ukraine

Project

Deploy 16 pieces of grain handling equipment, which will increase the operation rate by approximately 73 tones per hour



Location

ADM Romania terminals in the port of Constanta

Project Value

Total value: RON 8.985.690,94

Eligible value: RON 7.536.500,79



Recipient

ADM România Logistics SRL
Claudia-Miruna TOMESCU, director
Email: Miruna.Tomescu@adm.com

The upgrade project initiated by ADM Romania Logistics in 2023 is aimed at developing the operating capacity in the port of Constanta. Streamlining and increasing the effectiveness of the terminal operations will extend the load/unload capabilities for grain flows, particularly to and from Ukraine. 16 pieces of legacy grain handling equipment will be replaced with new and more efficient equipment, which will boost productivity and reduce ship loading time in the port of Constanta, while ADM's hourly operation rate will be increased by approximately 73 tones per hour

The total value of the project is RON 8,985,690.94, including RON 7,536,500.79 in total eligible value. The project's non-repayable eligible value shall be funded as follows: RON 3,768,250.40 through the Cohesion Fund and RON 3,768,250.39 from the national budget.

The project's implementation time shall be 12 months, i.e. until 31 December 2024.

Project cofinanced by the European Union from the Cohesion Fund through the Transport Program.
For more details on the Transport Program, please visit www.mt.ro
SMIS Code 312391.

December 2023

The funding contract (No 14/2023) was signed on 28 December 2023 with the Ministry of Transport and Infrastructure as the Management Authority for the Transport Program 2021-2027.

February 2024

ADM Romania Logistics officially commences the upgrading project for its superstructure in the port of Constanta with the aim to increase its grain handling capacity and to therefore streamline its port operations. The process to select equipment providers starts.

May 2024

ADM Romania Logistics signs the procurement contract for 16 pieces of grain handling equipment aimed at streamlining and increasing the effectiveness of the operations in its terminal in the port of Constanta. The selected supplier is Italy's AGI EMEA (<https://www.aggrowth.com>), with more than 30 years of experience in grain storage and handling equipment and one of the largest and most reputed manufacturers in Europe.

September 2024

The first batch of equipment manufactured by Italy-based company AGI EMEA (<https://www.aggrowth.com>), aimed at upgrading ADM's terminal in the port of Constanta, arrives in Romania.



October 2024

Deployment and testing start for the 16 pieces of grain handling equipment supplied by AGI EMEA.

December 2024

Official completion of ADM Romania Logistics' project to upgrade its superstructure in the port of Constanta.

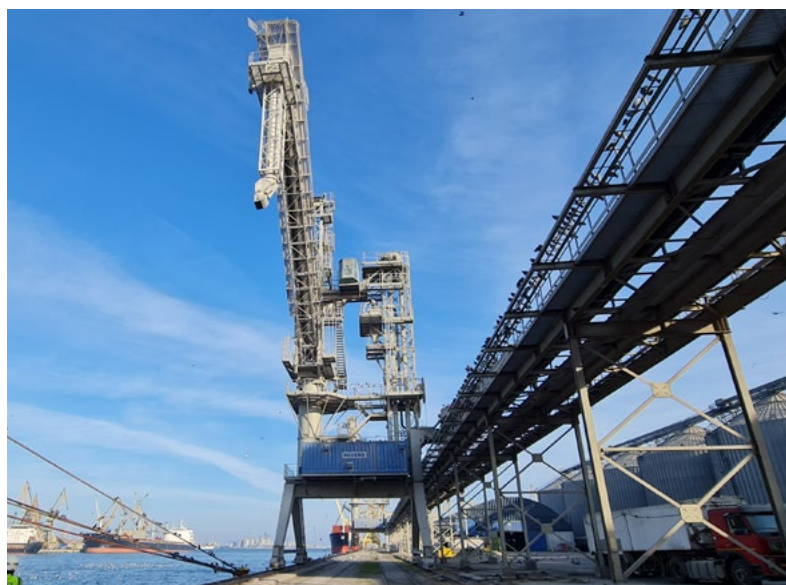
Project cofinanced by the European Union from the Cohesion Fund through the Transport Program.
SMIS Code 312391.

ADM Romania Logistics SRL is the division dealing with implementation and management of infrastructure and logistics projects for the operations in the ports of Constanta and Agigea.

About ADM Romania

ADM Romania is one of the largest traders of grains and oilseeds in Romania and the Danube region. It operates a network of 7 silos along the Romanian section of the Danube, a fleet of barges and one of the largest terminals in the port of Constanta. ADM Romania's team today counts around 400 employees.

ADM Romania was established in 2002 and gradually strengthened its position on the Romanian market by acquiring local operators, such as Alfred C. Toepfer International, Cerealcom Giurgiu or North Star Shipping Romania. ADM Romania is part of US multinational Archer Daniels Midland (ADM), one of the world's leading agricultural supply chain managers and processors, providing food security by connecting local needs with global capabilities. ADM is a significant provider of human and animal nutrition and offers one of the industry's largest portfolios of ingredients and solutions from nature.



The content of this material does not necessarily reflect the official position of the European Union or the Ministry of Transport and Infrastructure.

For more details on the other programs co-financed by the European Union, please visit www.mfe.gov.ro.