



Partner with ADM on
REGENERATIVE AGRICULTURE for:

Your Sustainable Sourcing & Environmental Impact Goals

ADM is your go-to partner to meet the emerging sustainability needs of your stakeholders and customers. Let us help you reach your sustainability goals through **Re:generations**, our regenerative agriculture program.

ACHIEVE MORE WITH ADM

Whether for corporate commitments, supply resiliency or to enhance your brand, ADM's data-driven, farmer-centric program helps enable supply chain carbon reductions, positive environmental outcomes and more.

re:generations[™]

Your goals. Our expertise.

Discover how ADM is paving the way with the commitments, investments, and solutions that make a positive impact toward a brighter future for us all.



For over a decade, ADM has been supporting sustainable and regenerative agriculture programs, and we continue to scale our efforts. In 2023, we worked with growers around the world to implement regenerative practices on over 2.8 million acres.



ADM: A Trusted Regen Ag Partner

Leading companies, governments and ag organizations work with ADM to advance regenerative agriculture because ADM's innovative, farmer-centric approach delivers direct supply chain impact with multiple benefits.



Reduced
Greenhouse Gas
Emissions



Improved
Biodiversity, Soil
& Water Quality

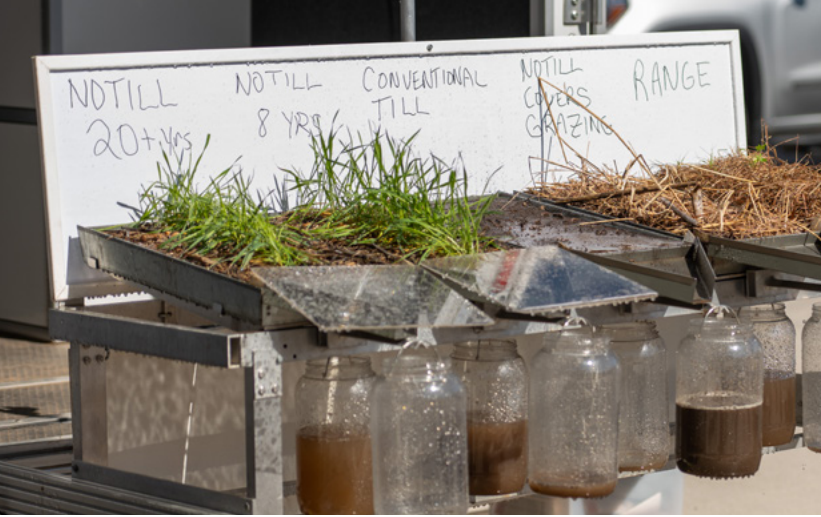


Increased Supply
Transparency



Stronger Farmer
Connections





Regenerative Agriculture 101

If it seems like you are suddenly hearing the expression ‘regenerative agriculture’ all the time, you aren’t wrong. The concept of ‘regen ag’ has gained considerable traction in the past couple of years. In 2023, 77% of consumers stated they were aware of regen ag, an increase of 20 points vs 2021.¹

Why Regenerative Agriculture?

As the world becomes increasingly concerned about climate impact, stakeholders are demanding change and holding companies accountable for sustainably operating. In response, companies are setting climate goals to lower their supply chain Scope 3 emissions footprint, which regenerative agriculture can address.

What are Scope 3 Emissions?

A company’s greenhouse gas footprint (which includes carbon) includes three scopes, but the majority of environmental impact is usually in Scope 3, specifically purchased ingredients. Regenerative agriculture addresses Scope 3 emissions by focusing on reducing the environmental impact of purchased ingredients.

Investors

90% of global institutional investors will revise investments if companies do not consider ESG criteria in their business model.²

Employees

Sustainability is a top criterion in choosing an employer for 2/3 of those under age 34.³

Consumers

84% of U.S. consumers say they would pay more for food products that are sustainably sourced.¹



CARBON EMISSIONS

SCOPE 1: DIRECT

- Company Facilities
- Company Vehicles

SCOPE 2: INDIRECT

- Purchased Energy

SCOPE 3: INDIRECT

- Purchased Ingredients & Services
- Transportation
- Distribution

What is Regenerative Agriculture?

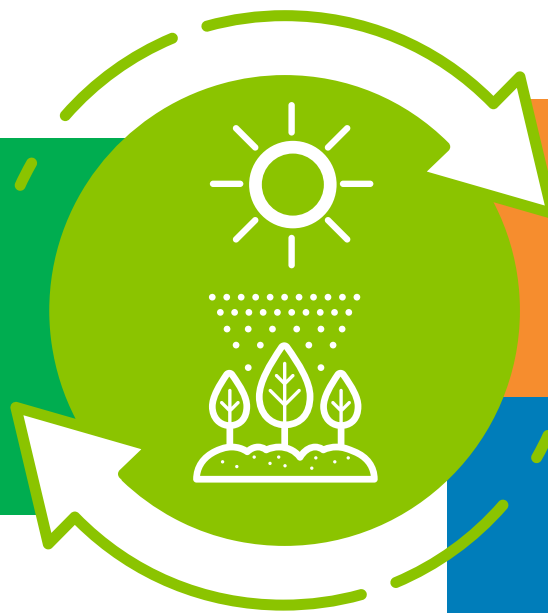
ADM defines it as a system of practices that sequester carbon in the soil and intentionally improve soil health, biodiversity, water quality and air quality while ensuring the viability of farm production. Adapted to local physical conditions, regen ag revolves around five guiding principles that create positive outcomes and enable long term impacts.

Principles & Practices: Regenerative Agriculture Summary



KEY REGENERATIVE AGRICULTURE PRINCIPLES

- Keep soil covered
- Minimize soil disturbance
- Maximize biodiversity
- Maintain living roots
- Responsibly manage inputs



POSITIVE OUTCOMES

- Combat climate change
- Improves land resiliency
- Increases farm profitability
- Supports water quality

LONG-TERM IMPACTS

- Farm profitability
- Soil health
- Biodiversity
- Watershed health

ADM re:generations™

How does it work?



Direct Impacts on your ADM Sourced Products

Acres mapped to your supply shed offer credible, farm level reduction outcomes that you can use to meet your Scope 3 GHG emission reduction goals.



STEP 1 You Sign Up for Acres

Work with ADM to match your product volume with regeneratively managed acres across multiple crop types sourced from Re:generations farmers.



STEP 2 Farmers Implement Practices

ADM enrolls farmers, sets up data collection and manages financial incentives and technical support to implement regenerative practices.



STEP 3 Your Company Benefits

Use your annual outcomes data package to report against goals and make product claims across metrics like:

- Scope 3 GHG reductions
- Water quality & use
- Nitrogen efficiency
- Biodiversity



ADM re:generations™

Why ADM?

Our scope and partnerships make us your one-stop shop for sustainable sourcing

Global Coverage in 2023

Targeting 5 million acres in 2025.



World Class Technical Partners

ADM's project partners are experts that carry credibility with farmers and help accelerate field level practices.



Scalable, Multi-Crop Network

ADM offers coverage across a variety of ingredients.



CORN



COTTON



WHEAT



CANOLA



SOY



BARLEY



PEANUT



SORGHUM

Beyond Carbon:

ADM Delivers More

Whether for corporate commitments, to mitigate supply risk or to enhance your brand, ADM's innovative, farmer-centric program enables benefits beyond Scope 3 GHG emissions reductions.

Why ADM?

- Direct supply chain impact
- Data-driven, farmer-centric approach
- A decade of experience & expertise
- Scalable, multi-crop network
- Brand insights & messaging support
- Close relationships with growers & technical partners



How Can You Benefit?



Reduce Scope 3
GHG Emissions



Improve Soil,
Biodiversity &
Water Quality



Increase Supply
Transparency



Mitigate Risk via
Farm Resilience



Expand Farmer
Connections

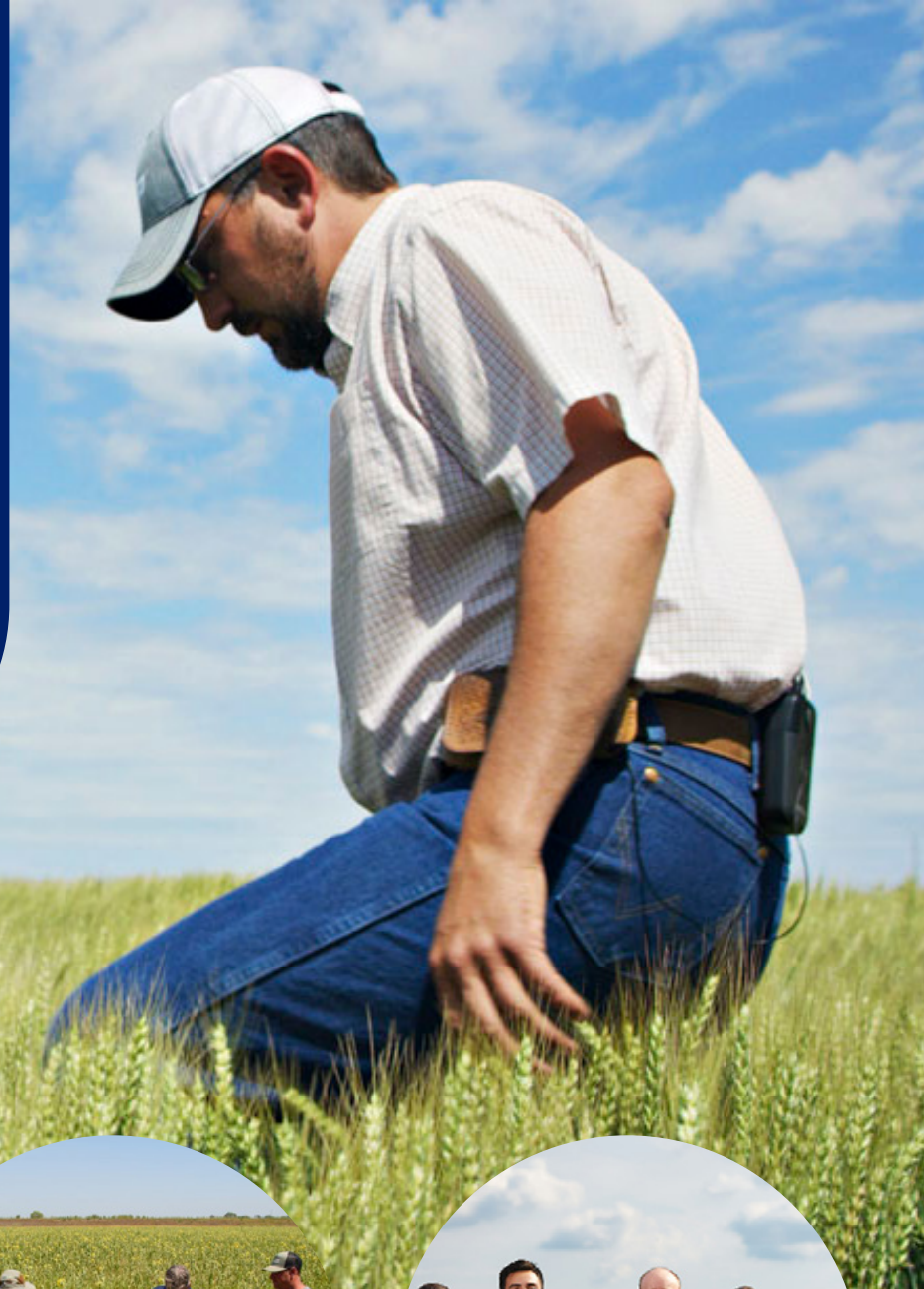


Enhance
Brand

ADM Advantage

Direct Grower Connections

Enabling stronger supply chain connections, communications opportunities and long-term program success.



Grower Events

Grower appreciation events strengthen your connection to producers and the source of your key ingredients.

On-Farm Events

On-farm events feature tech partners that help scale regen ag practice adoption, and advance your goals.

Farm Family Meet-Ups

Direct farm family meet-ups enable transparency and supply chain messaging/story telling.



Our purpose is to unlock the power of nature to enrich the quality of life

At ADM, sustainable practices and a focus on environmental responsibility are not separate from our primary business: they are integral to the work we do every day to serve customers. Our sustainability strategy is organized into three pillars with a variety of actions under each.



Feed the World



Protect Nature



Enrich Lives

ADM. Your Go-To Sustainability Partner.

The commitments, expertise and scale to achieve your goals & create impact.

Ambitious Environmental Targets & Investments

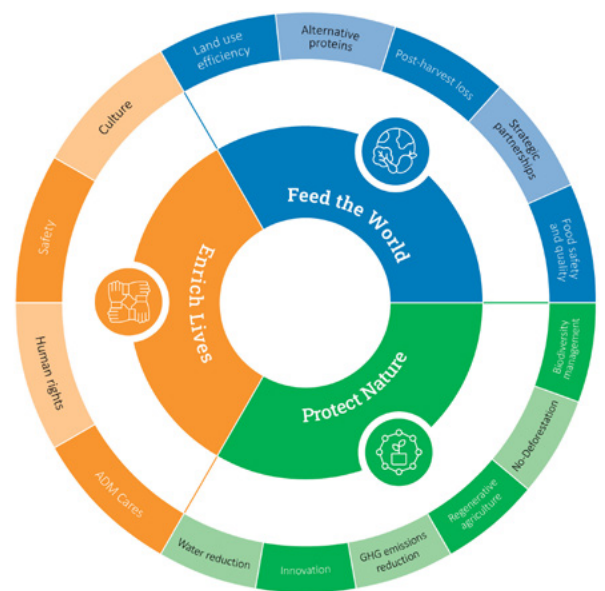
Targets across GHG Emissions, Energy, Water & Waste
Investments in De-carbonization & Renewable Energy

Regen Ag Leadership & Direct Grower Connections

Expanding our program across millions of acres to help you address Scope 3 reduction and climate goals

Supply Chain Scale

Our vast footprint and extensive range of climate-smart crops make for one-stop sustainable sourcing



adm.com/sustainability

Contact Us to
Learn More

