



Lower carbon flour sourcing. A simple way to increase your sustainability.



Partner with ADM to achieve your environmental impact goals.

As the world grows more concerned about slowing climate change and improving the planet's soil health, sustainability has become a corporate imperative. ADM can help you answer this growing demand with our net carbon neutral milling network and regenerative agriculture programs aimed at reducing your carbon footprint.

Your goals. Our expertise.

ADM has been supporting sustainable and regenerative agriculture programs since 2012. Since that first project, we have launched **17 programs** across major crops and supply sheds, representing **800,000+ acres**, winning several industry and customer awards along the way. Discover how ADM is paving the way with good business practices, progressive solutions and mindful actions that make a positive impact toward a brighter future for us all.



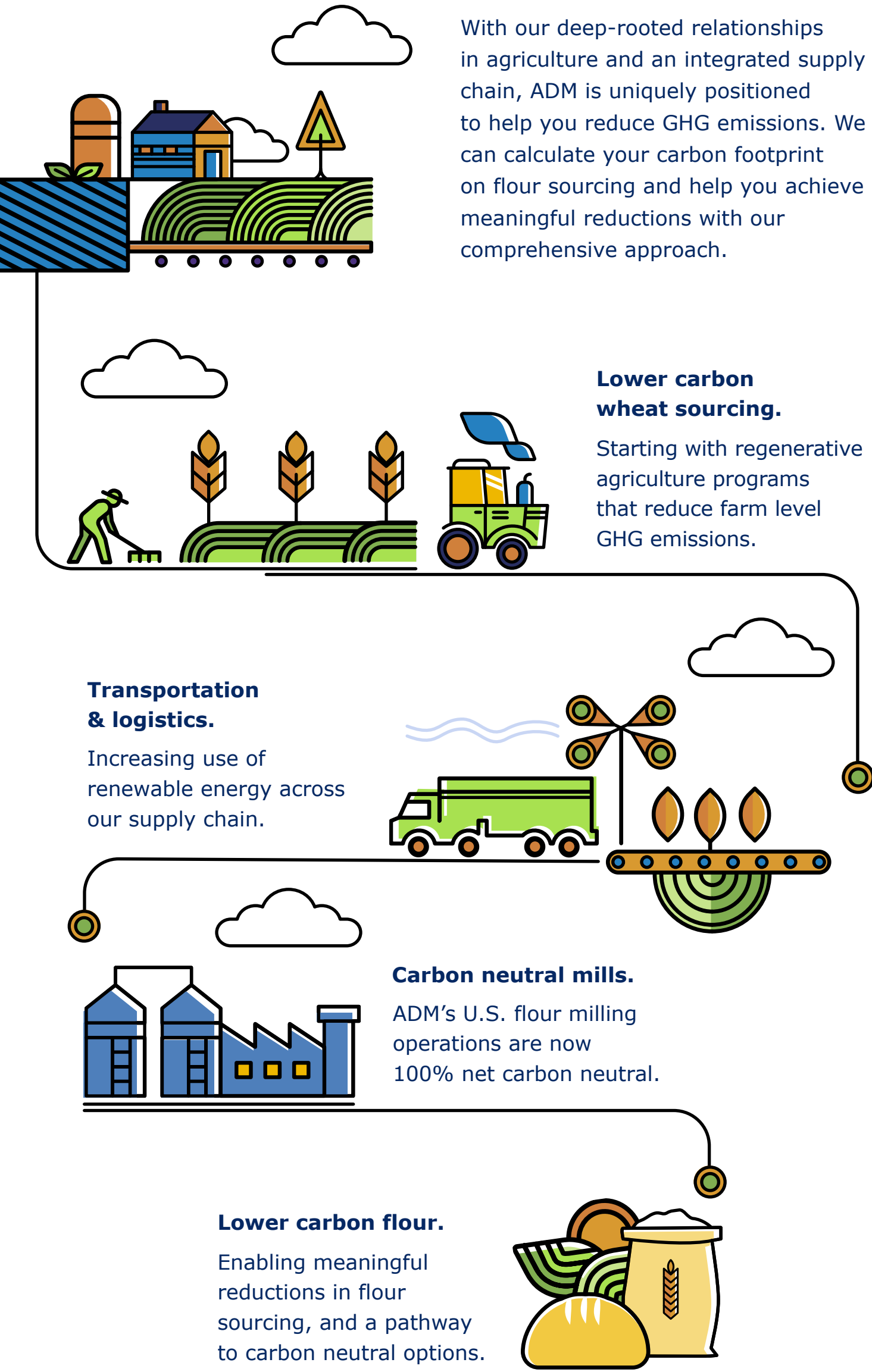
Local expertise. National scale.

ADM's vast supply network and local project partners enable recruitment, support and grower engagement to help you deliver on your goals.



Our process.

With our deep-rooted relationships in agriculture and an integrated supply chain, ADM is uniquely positioned to help you reduce GHG emissions. We can calculate your carbon footprint on flour sourcing and help you achieve meaningful reductions with our comprehensive approach.



Solutions that drive impact.

ADM's programs are insets with direct impact on Scope 3 emissions in your supply chain. Our integrated approach connects you to fields and growers linking your finished products back to the farm for transparency and quality connections that matter to consumers.



Let's Collaborate.

milling@adm.com | adm.com/wholesome